

Community Meeting November 21, 2024, 6:30 pm  
Foothill High School

## Shasta Fire Safe Council Presentation on preparing a Community Wildfire Preparation Plan (CWPP)

The Shasta County Fire Safe Council, a non-profit organization funded through grants (federal, state), gave a presentation at Foothill High School November 19, on their current programs with a request for community involvement on plans to reduce wildfire risk in the community.

For information on the Fire Safe Council, see their website: [shastafiresafe.org](https://shastafiresafe.org).

For many helpful videos on wildfire and defensible space preparation, see [firesafemarin.org](https://firesafemarin.org).

### In brief, their current programs are:

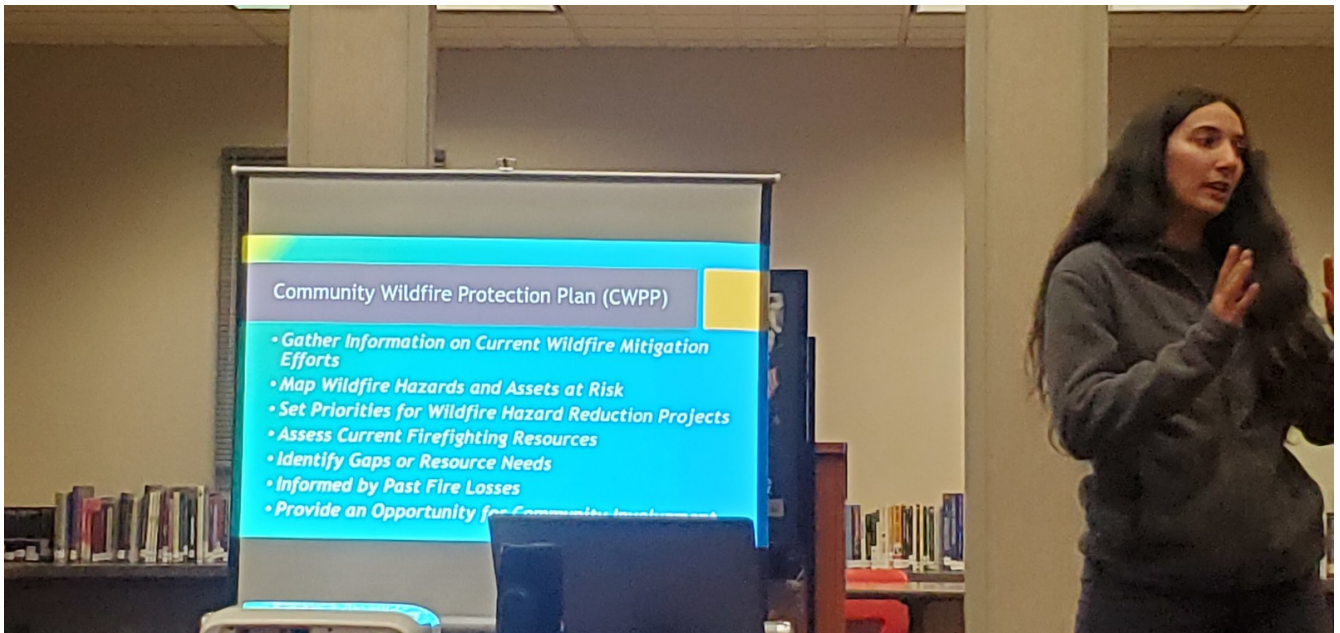
1. Fuels mitigation projects. Here they want “fire wise communities”, where community members band together to request defensible space help. It is far more likely to get financial help if a large portion of the community is behind the program. They have tried to get a Millville/Palo Cedro Fire Wise Community going in the past, but it fizzled.
2. Chipper program. This is funded for the next 5 years. For info on what you need to do to request your brush and wood pile be chipped down, see their website [shastafiresafe.org](https://shastafiresafe.org).
3. Home hardening program. Whitmore was selected for a pilot program - again, see their website. They would like to help up to 500 homes with this program.

### Other projects they are doing:

1. Collecting information on current wildfire mitigation efforts. This includes aerial mapping, fire behavior modeling, mapping the location of assets (e.g., schools), and roadside drive videos assisted with AI to map areas at ground level.
2. Requesting input from the community regarding wildfire risks so they can be mapped and entered into their system, including popular shooting areas and areas where there is only one way in and one way out (these two were actually in their presentation).
3. Developing a "Community Wildfire Protection Plan" using the data collected above and from public surveys. They have hired the consulting firm [Deer Creek Resources](https://www.deercreekresources.com) to provide mapping and write the Plan. This Plan will include a prioritized list of projects that will be used to apply for grants to fund fire mitigation in our area, including on private property.

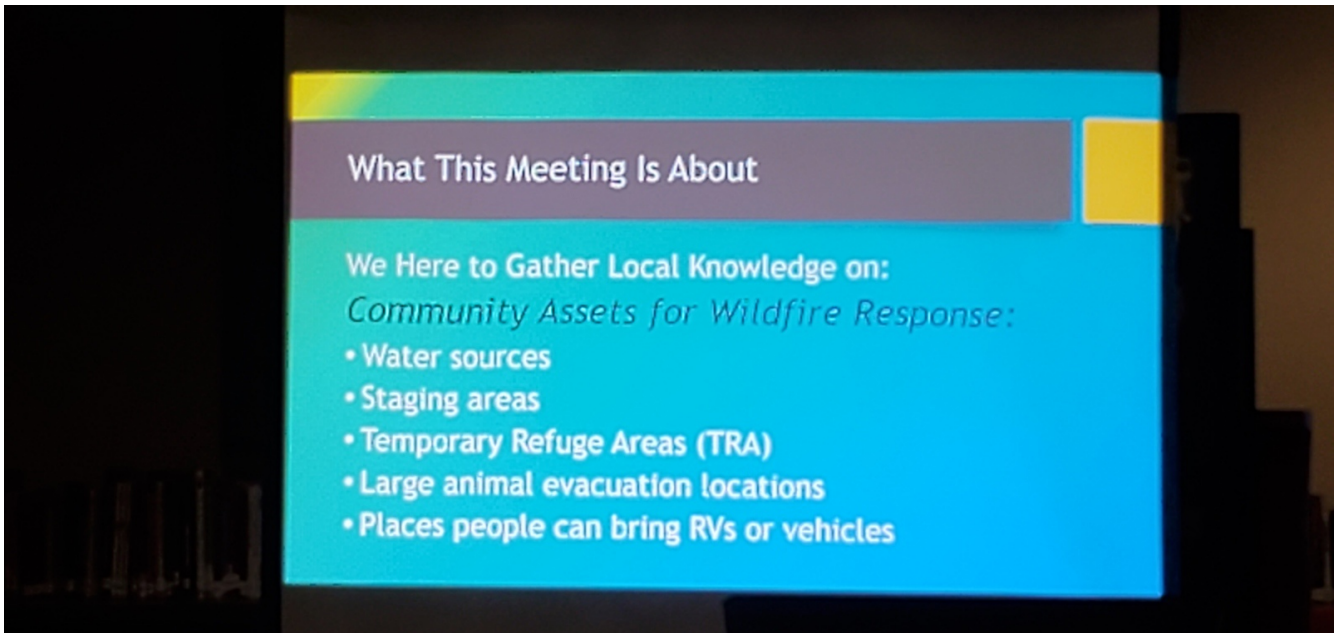
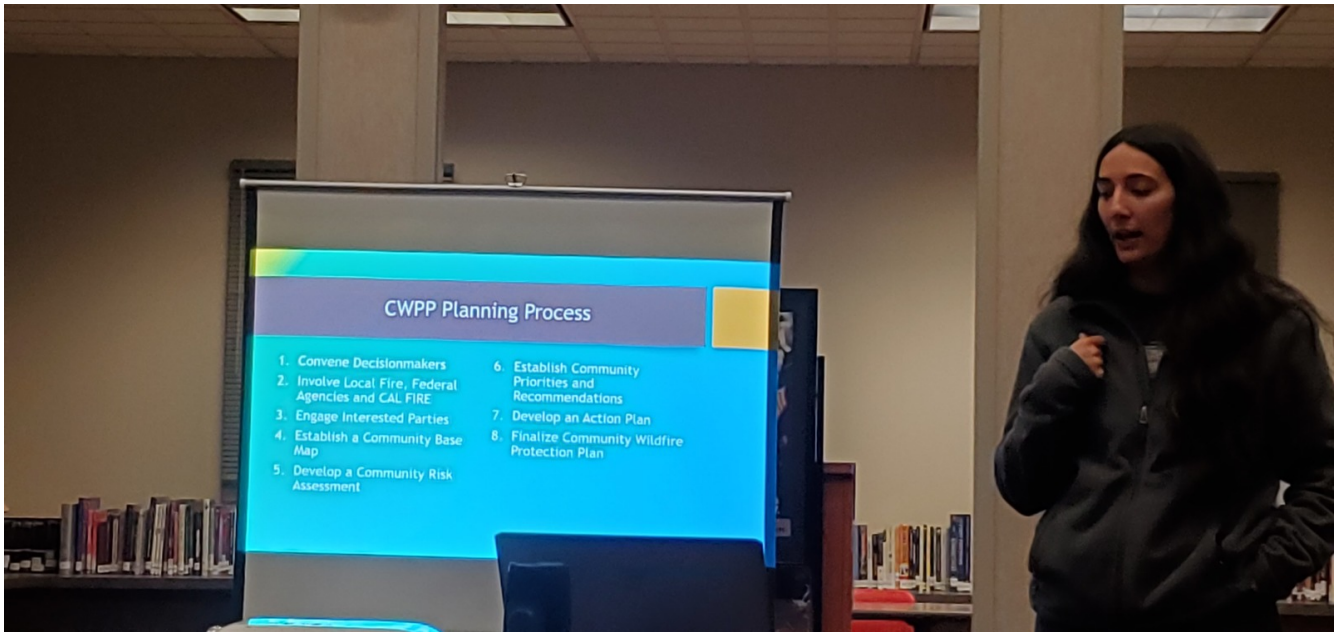
We provided them the one page summary of the wildfire risk that the proposed Millville Plains Range presents, and showed them where on their map it is located.

The attached photos show the slides from their presentation.

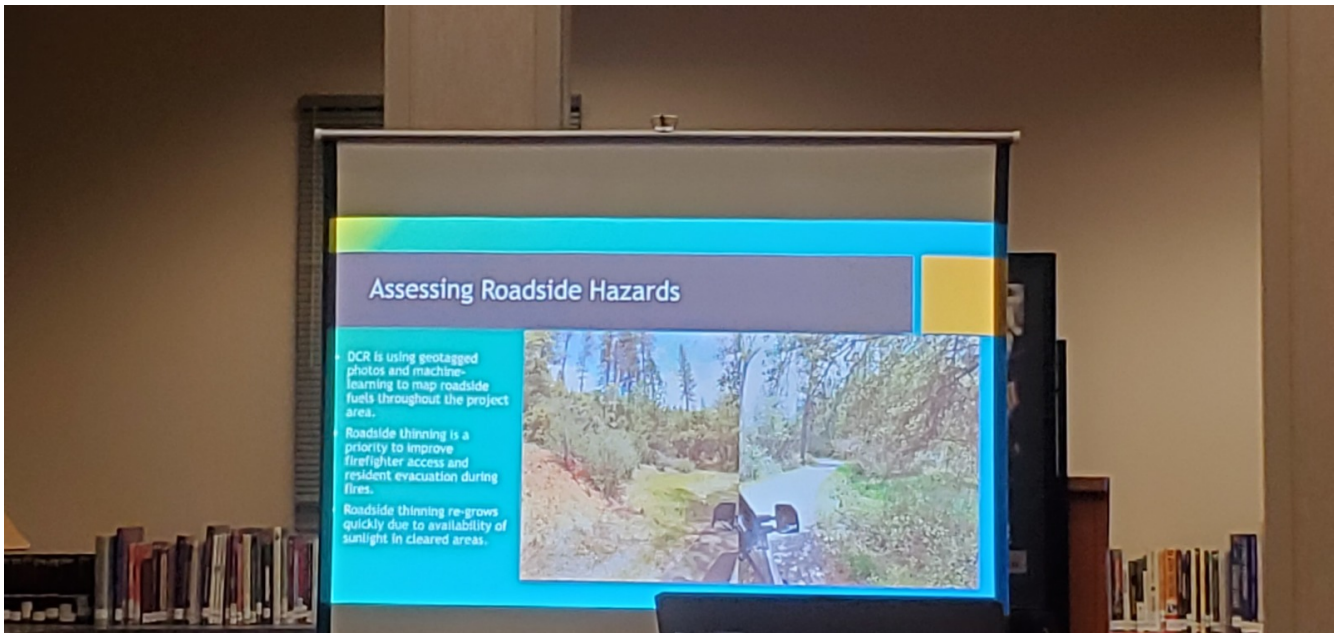
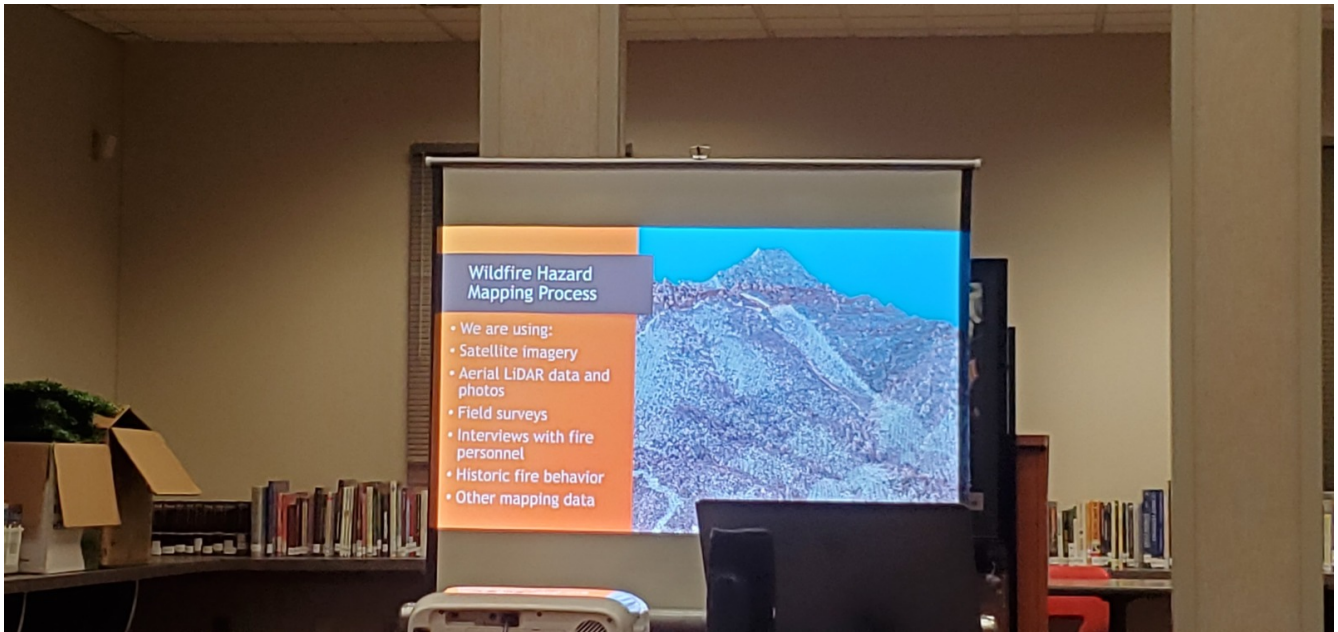


### Community Wildfire Protection Plan (CWPP)

- Gather Information on Current Wildfire Mitigation Efforts
- Map Wildfire Hazards and Assets at Risk
- Set Priorities for Wildfire Hazard Reduction Projects
- Assess Current Firefighting Resources
- Identify Gaps or Resource Needs
- Informed by Past Fire Losses
- Provide an Opportunity for Community Involvement

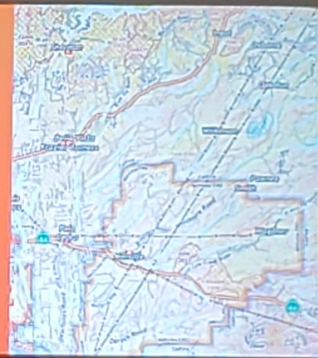






## Fire Behavior Modeling

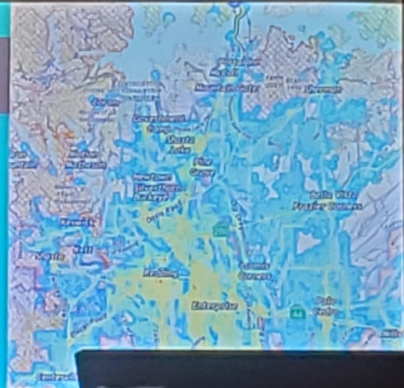
- Uses historic weather
- Satellite-derived fuels
- Terrain
- Shows potential fire intensity
- Rates of spread
- Crown vs surface fire
- Big-picture view



## Mapping Assets at Risk

There are not enough resources to treat every acre. We need to focus work around:

- Buildings
- Schools
- Powerlines
- Roads
- Businesses
- Communications Sites



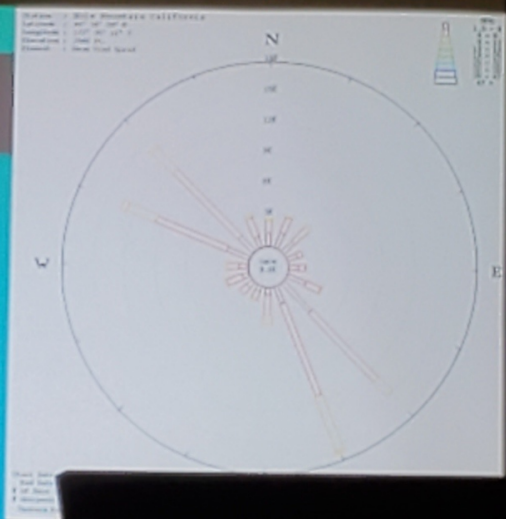


## Fire History - Every Fire Tells a Story



## Wind Drives Fires Daily and Seasonal Patterns

- Summer Winds for Mule Mtn RAWs  
(East of Redding at 2,044 ft elev).
- Prevailing winds are from SE and NW
  - SW and NE north winds uncommon
  - Moderate winds (8-13mph) are common



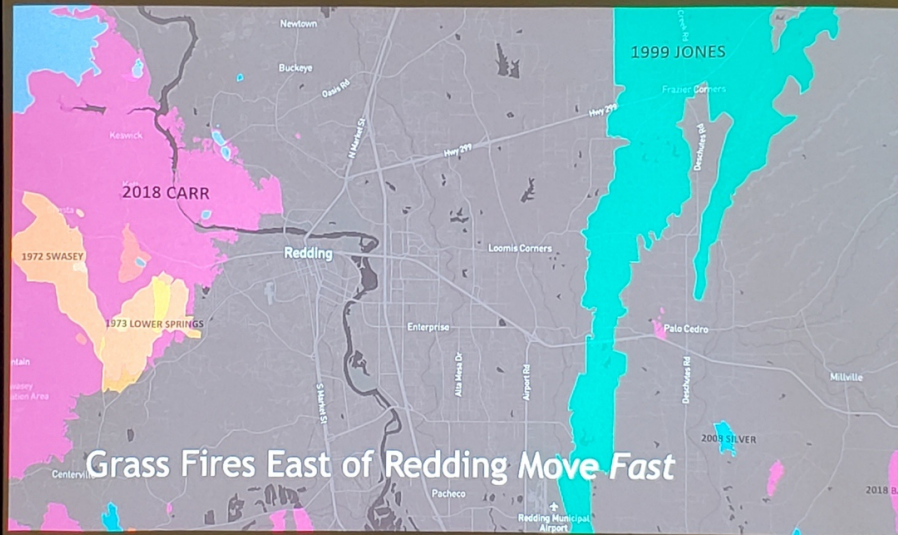
## 1999 Jones Fire

- Fire started October 16 (human-caused)
- Driven by hot, dry 25 mph north wind
- Destroyed 954 structures, including 128 homes
- One firefighter fatality
- One of California's 20 most destructive wildfires
- Grew to 26,000 acres and 20 miles before containment on October 19
- 2,500 people evacuated, disrupted power
- Critical fire weather pattern drove rapid growth, with strong north winds



Fire is *inevitable*. How you prepare for it makes a difference.

Defensible space and home hardening are critical if your home is to survive the fires which are sure to come.



## Grass Fires East of Redding Move Fast